

# RF-35

## High volume commercial microwave and RF laminate

RF-35 is an organic-ceramic laminate in the ORCER family of Taconic products. It is based on woven glass reinforcement. RF-35 is a result of Taconic's expertise in both ceramic fill technology and in coated PTFE fiberglass.

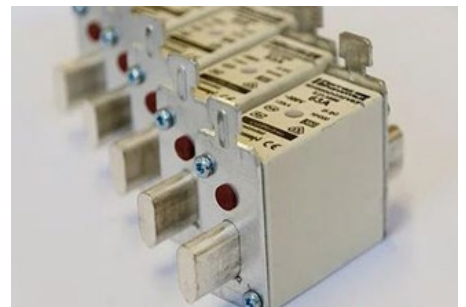
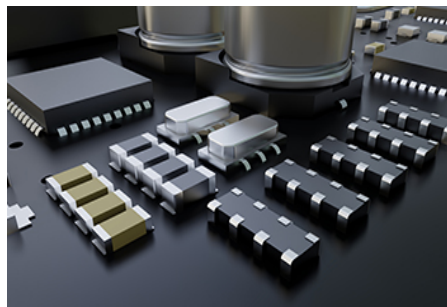
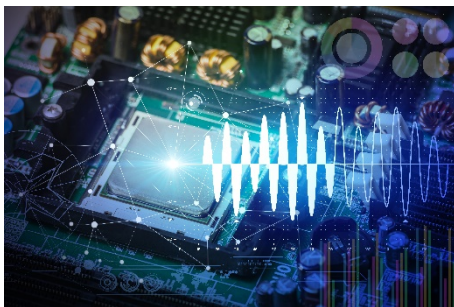
RF-35 is the best choice for low cost, high volume commercial microwave and radio frequency applications. And excellent peel strength for 1/2 ounce and 1 ounce copper (even in comparison to standard epoxy materials), a critical aspect whenever rework is required. And ultra low moisture absorption rate and low dissipation factor minimize phase shift with frequency.

### Benefits

- Low Cost
- Excellent Peel Strength
- Exceptionally Low Dissipation Factor
- Low Moisture Absorption
- Enhanced Surface Smoothness

### Applications

- Power amplifiers
- Filters and couplers
- Passive components



**Asia/Australia**  
**Korea Taconic Company**  
Republic of Korea  
Tel: +82-31-704-1858  
agc-ml.ktc-sales@agc.com  
www.agc-multimaterial.com

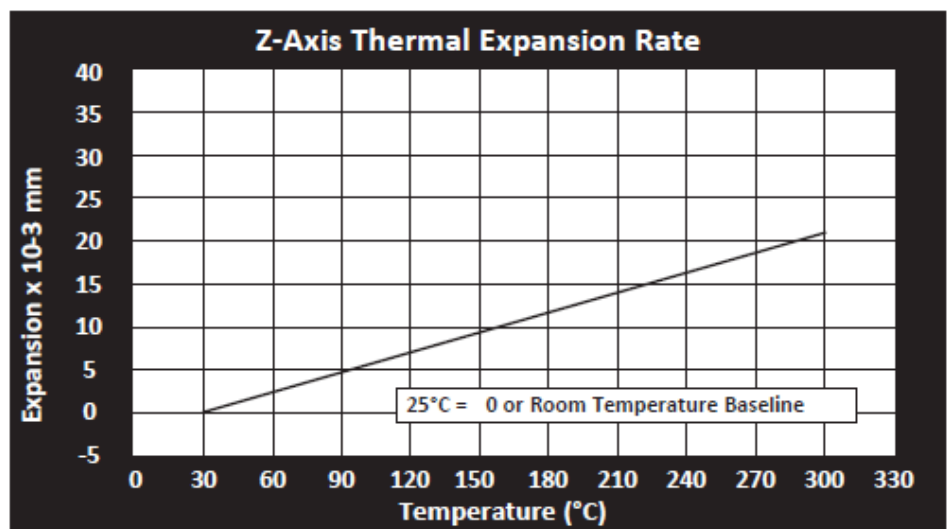
**China**  
**AGC Multi Material (Suzhou) Inc.**  
Suzhou City, China  
Tel: +86-512-286-7170  
tssales@taconic.co.kr  
www.agc-multimaterial.com

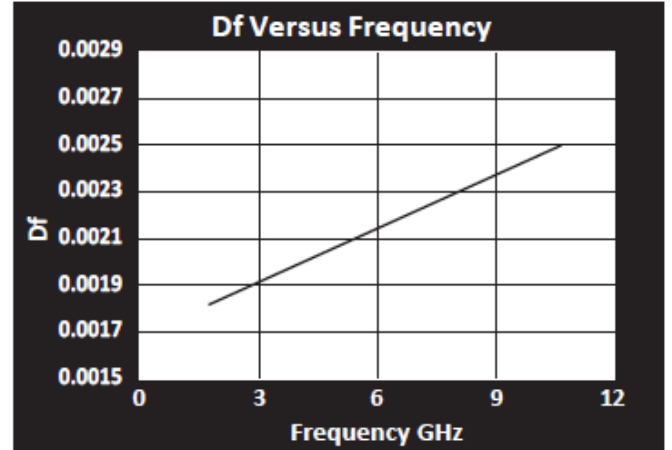
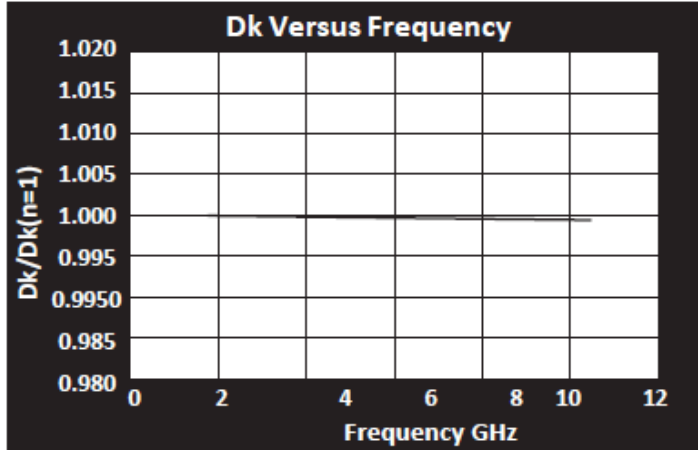
**Europe/Middle East**  
**AGC Multi Material Europe SA**  
Lannemezan, France  
Tel: +33-05-6298-5290  
neltecsales@agc-nelco.com  
www.agc-multimaterial.com

**North&South America**  
**AGC Nelco America Inc.**  
Tempe, AZ USA 85281  
Tel: +602-679-9196  
TaconicPO@agc-nelco.com  
www.agc-multimaterial.com

RF-35 Typical Values					
Property	Test Method	Unit	Value	Unit	Value
Dielectric Constant @ 1.9 GHz	IPC-TM 650 2.5.5		3.50		3.50
Dissipation Factor @ 1.9 GHz	IPC-TM 650 2.5.5		0.0018		0.0018
Moisture Absorption (.060")	IPC-TM 650 2.6.2.1	%	0.02	%	0.02
Peel Strength (1/2 oz. copper)	IPC-TM 650 2.4.8	lbs./linear inch	>8.0	N/mm	>1.5
Peel Strength (1 oz. copper)	IPC-TM 650 2.4.8	lbs./linear inch	>10.0	N/mm	>1.8
Dielectric Breakdown	IPC-TM 650 2.5.6	kV	41	kV	41
Volume Resistivity	IPC-TM 650 2.5.17.1	Mohm/cm	1.26 x 10 <sup>9</sup>	Mohm/cm	1.26 x 10 <sup>9</sup>
Surface Resistivity	IPC-TM 650 2.5.17.1	Mohm	1.46 x 10 <sup>8</sup>	Mohm	1.46 x 10 <sup>8</sup>
Arc Resistance	IPC TM 650 2.5.1	seconds	>180	seconds	>180
Flexural Strength Lengthwise	ASTM D 790	psi	>22,000	N/mm <sup>2</sup>	>152
Flexural Strength Crosswise	ASTM D 790	psi	>18,000	N/mm <sup>2</sup>	>124
Thermal Conductivity	ASTM F 433	W/m/K	0.24	W/m/K	0.24
Tensile Strength Lengthwise	ASTM D 638	psi	27,000	N/mm <sup>2</sup>	187
Tensile Strength Crosswise	ASTM D 638	psi	21,000	N/mm <sup>2</sup>	145
Dimensional Stability Lengthwise	IPC-TM 650 2.4.39	in/in	0.00004	mm/mm	0.00004
Dimensional Stability Crosswise	IPC-TM 650 2.4.39	in/in	-0.00010	mm/mm	-0.00010
x-y CTE	ASTM D 3386 (TMA)	ppm/°C	19-24	ppm/°C	19-24
z CTE	ASTM D 3386 (TMA)	ppm/°C	64	ppm/°C	64
Flammability	UL-94	%	V-0	%	V-0
Hardness	Rockwell M Scale	%	34	%	34

Type	Dk	
TLY-5A	2.17	
TLY-5	2.20	
TLY-3	2.33	
TLT-0	TLX-0	2.45
TLT-9	TLX-9	2.50
TLT-8	TLX-8	2.55
TLT-7	TLX-7	2.60
TLT-6	TLX-6	2.65
TLE-95	2.95	
TLC-27	2.75	
TLC-30	3.00	
TLC-32	3.20	
RF-30	3.00	
RF-35	RF-35P	3.50
RF-60	6.15	
CER-10	10	





Remarks : All reported values are typical and should not be used for specification purposes. In all instances the user shall determine suitability in any given application.

How to Order	
Designation	Dielectric Constant
RF-35	3.5+/- 0.1
Available Thickness	Normal Dielectric Constant
0.0100" (0.25mm)	3.5
0.0200" (0.50mm)	3.5
0.0300" (0.76mm)	3.5
0.0600" (1.52mm)	3.5

Standard sheet size is 36" x 48" (914mm x 1220mm). Please contact our Customer Service Department for availability of other sizes and claddings.

RF-35 can be ordered with the following electrodeposited copper :			
Designation	Weight	Copper thickness	Copper Thickness
CH	1/2 oz./sq. ft.	~ .0007"	~18 μm
C1	1 oz./sq. ft.	~ .0014"	~ 35 μm
C2	2 oz./sq. ft.	~ .0028"	~ 70 μm

Panels may be ordered cut to size	
Typical Panel Sizes	
12" x 18"	304mm x 457mm
16" x 18"	406mm x 457mm
18" x 24"	457mm x 610mm
16" x 36"	406mm x 914mm
24" x 36"	610mm x 914mm
18" x 48"	457mm x 1,020mm

An example of our part number is : RF-35-0600-CH/CH-18" x 24" (RF-35-0600-CH/CH-457mm x 610mm)